

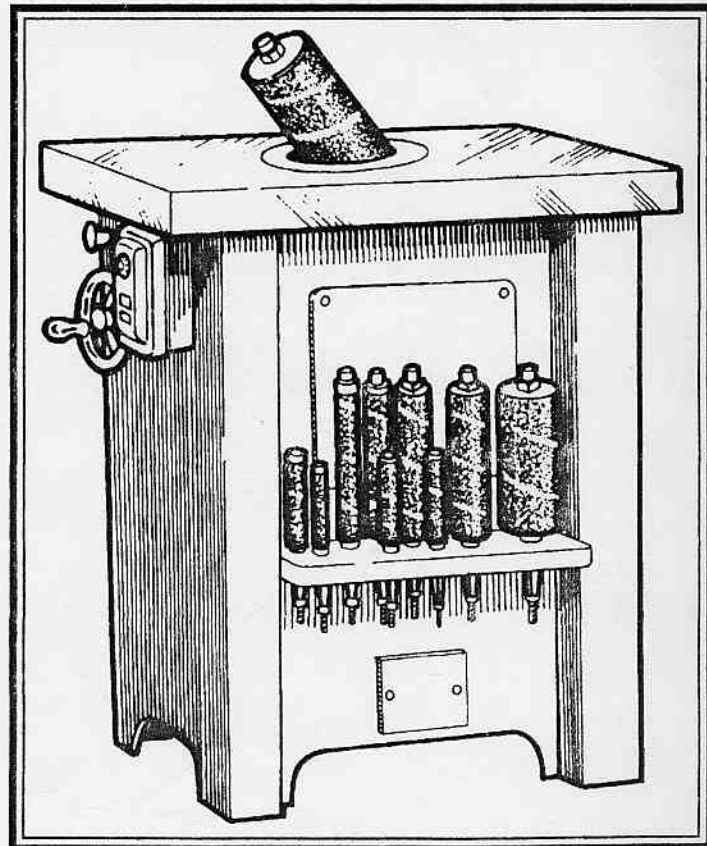
# STATE T-5

Variable Speed

# Spindle Sander

---

## Owner's Manual



**STATE Sanders**

Exclusively Distributed by  
**FREEMAN Mfg. & Supply Co.**

1101 Moore Road

Avon, Ohio 44011

440-934-1902, FAX 440-934-7200

## Safety Precautions



**WARNING: To Prevent Blindness Or Other Seriou d Injury,  
The Following The Precautions Listed Below.**



1. **KNOW YOUR SANDER**  
Read this Operator's manual carefully and completely before attempting to operate the Sander. Make sure you are aware of and understand this Sander's capabilities, limitations as well as any potential operating hazards.
2. **AVOID ACCIDENTAL STARTING**  
Make sure that the Sander is "OFF" by depressing the "STOP" button on the Control Box. Do this BEFORE plugging the power cord into the electrical power supply.
3. **GROUND SANDER**  
To protect against electrical shock, this Sander should be properly grounded in accordance with local electrical codes.  
READ SET-UP INSTRUCTIONS.
4. **CLEAR TILT TABLE OF ALL OBJECTS BEFORE STARTING SANDER.**
5. **SECURELY MOUNT SANDER INTO POSITION.**  
Make sure that once you've decided on the location of your Sander, bolt it securely to the floor.
6. **WEAR APPROPRIATE CLOTHING**  
Wear safety glasses with side shields or other ANSI approved eye protection. DO NOT wear loose fitting clothing or jewelry (unbuttoned sleeves or shirts, etc.) which could get caught in moving parts.
7. **ALWAYS MAINTAIN SAFE OPERATING POSITIONS.**  
Stay within convenient reach of START-STOP control AT ALL TIMES while operating Sander. Maintain good footing and balance while operating Sander.
8. **KEEP WORK AREA CLEAN**  
Cluttered work areas, work surfaces and slippery floors from oil or wood dust invite accidents.
9. **AVOID DANGEROUS WORK ENVIRONMENT.**  
Keep work area well illuminated and clear of unnecessary objects. Allow for sufficient space around Sander to operate and perform sanding operations safely.
10. **SECURELY HOLD WORKPIECE TO BE SANDED.**  
Make sure that the piece to be sanded is held flat and secure during all sanding operations.
11. **KEEP WORK AREA CLEAR OF VISITORS DURING SANDING OPERATIONS.**  
Any and all visitors should be kept at a safe distance from the Sander during all preparation and sanding phases.
12. **MAINTAIN SANDER IN TOP OPERATING CONDITION.**  
Use proper Abrasives for the type of material to be sanded and keep the Sander as clean as possible at all times. This practice will contribute to safe and reliable Sander operation.
13. **USE ONLY RECOMMENDED ACCESSORIES.**  
The use of accessories NOT MANUFACTURED FOR THIS SANDER could contribute to unsafe Sander operation and performance.
14. **ONLY TRAINED, EXPERIENCED PROFESSIONALS SHOULD OPERATE OR SERVICE THIS SANDER.**
15. **WHEN SANDING THE INSIDE DIAMETER OF A CIRCLE, (such as a ring-type pattern or hole in a plate), ALWAYS choose a Sanding Drum with a diameter less than 1/2 the inside diameter of the part to be sanded to prevent piece from becoming locked onto and rotated with the Spindle**
16. **ALWAYS CHOOSE THE SMALLEST THROAT RING** that will allow for Spindle clearance in order to minimize the Table-to-Drum clearance. Whenever possible, keep hands away from Sanding Drum.
17. **NEVER SAND MATERIALS THAT ARE PRONE TO THROW PROJECTILES SUCH AS FILLED PLASTER.**
18. **DO NOT SAND OBJECTS THAT ARE BIGGER THAN THE TABLE.**

### IMPORTANT

**Disconnect Power Cord From Electrical Supply BEFORE Attempting To Perform Any Service On This, Or Any Other Piece Of Machinery**

## Index

Page	Contents
1	Safety Precautions
2	Description & Specifications & FREEMAN Warranty
3 & 4	Sander Set-Up & Operation
4	Sander Maintenance & Repair
5	T-5 Sander Illustration
6	Tilt Arbor Assembly
7 & 8	Spindle Drive Assembly
9 & 10	Oscillating Mechanism
11	POSITIV-LOK Spindles (Current Model Sander)
12	POSITIV-LOK Spindles (Old Model Sander)
12	Miscellaneous Parts
13 & 14	Electrical Controls
15	Spindle Sander Accessories

## FREEMAN Limited Warranty

This Limited Warranty, exclusive of FREEMAN Mfg. & Supply Co., applies to any product(s) formulated and / or manufactured by (or specifically for), FREEMAN Mfg. & Supply Co., and protects the user from defective material and/or faulty workmanship for a period not to exceed one (1) year from date of original shipment.

FREEMAN will repair or replace (within 90 days) free of charge, any product returned freight pre-paid and determined by FREEMAN to be defective from use under normal conditions.

Any defective product in need of repair, which is returned after ninety (90) days, but within one (1) year, will be repaired for a nominal charge, (pre-quoted and with the approval of user). Any product NOT formulated and/or manufactured by, (or specifically for) FREEMAN is considered to be covered by that manufacturer's exclusive warranty and will be handled accordingly.

NO OTHER WARRANTY, WRITTEN OR ORAL, applies to any product(s) manufactured by, or for FREEMAN Mfg. & Supply Co. No employee, agent, dealer, or other person, is authorized to give any warranty on behalf of FREEMAN Mfg. & Supply Co.

FREEMAN is not liable for damage of any sort, including incidental and consequential.

## Description and Specifications

Your STATE T-5 Variable Speed Spindle Sander, with Tilt Arbor and POSITIV-LOK Spindles is one of the most popular and dependable Spindle Sanders made for wood and metal sanding applications.

The POSITIV-LOK Spindles are designed and manufactured to provide the safest and quickest means of changing Spindles. By just turning the Drawbar Cap of the Spindle either counterclockwise (for removal) or clockwise (for installation) the Spindles can be changed that easily.

The work height is unrestricted because the Abrasive Sleeves are securely mounted in place below the table.

The Tilt Arbor feature also adds to the versatility of this Sander.

### Other features include:

- ♦ **Variable Spindle speed of 500 - 1750 rpm** – which provides the ability to control the sanding speed relative to the piece being sanded.
- ♦ **Large, 27<sup>1</sup>/<sub>2</sub>" x 32" Steel Table** work surface.
- ♦ **Tilting Arbor (0° to 45°)** permits work piece to remain in horizontal position, providing operator with complete control of sanding operation, especially with large pieces.
- ♦ **Integral Spindle Tray** for convenient storage of eleven (11) Spindles.
- ♦ **The Oscillating Spindle Mechanism and related bearings operate in a bath of oil** for smooth, quiet and wear-resistance operation.
- ♦ **Positiv-Lok Drawbar Spindles**, allow for quick and easy installation and removal without the need for any tools.
- ♦ **All controls are located within easy**

## Ordering Information

Cat. No.	Description	Motor Specs.				
		HP	Volts	Ph	Hz	RPM
018103	STATE T-5 Spindle Sander	3/4	115	1	60	500-1750
018105	STATE T-5 Spindle Sander	3/4	230	1	60	500-1750

## Sander Specifications

Table Size . . . . .	27 <sup>1</sup> / <sub>2</sub> " x 32"
Table Height (from floor) . . . . .	36"
Table Tilts . . . . .	0° - 45
Spindle Speed . . . . .	500 - 1750 rpm
Vertical Oscillation @ 90 spm . . . . .	1-5/8"
Floor Space Required . . . . .	27 <sup>1</sup> / <sub>2</sub> " x 32"
Shipping Weight . . . . .	550 lbs.

## Accessories

Description	Cat. No.
Throat Rings (small)	018056
Throat Rings (med)	018057
Throat Rings (large)	018058
POSITIV-LOK Spindles	
1/4 x 5 (1 incl)	018432
3/8 x 6 (1 incl)	018431
1/2 x 6 (1 incl)	018430
5/8 x 6 (1 incl)	018429
3/4 x 9 (5 incl)	018428
3/4 x 9" (1 incl)	018426

\* For use without Rubber Drum

## Spindle Sizes (inches)

♦ 1/4 x 5	♦ 3/8 x 6
♦ 1/2 x 6	♦ 5/8 x 6
♦ 3/4 x 9	♦ 1 x 9
♦ 1-1/2 x 9 *	♦ 2 x 9 *
♦ 3 x 9 *	♦ 4 x 9 *

\* Includes Expandable Rubber Drums

## Standard Equipment

- ♦ Throat Rings (3)
- ♦ Garnet Abrasive Sleeves (10)
- ♦ Expandable Rubber Drums (5)  
1", 1-1/2", 2", 3" & 4" dia. sizes
- ♦ POSITIV-LOK Drawbar Spindles (10)
- ♦ Motors and Controls



# Set-Up Instructions

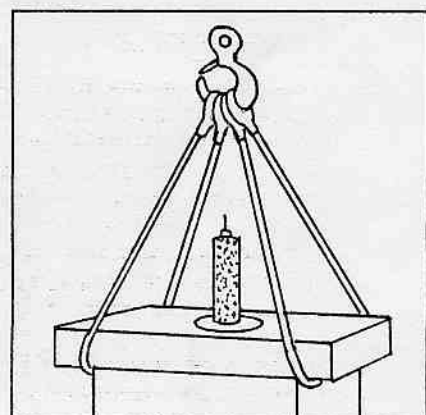
1. While using proper tools and wearing proper safety apparel, carefully unpack your Spindle Sander.

NOTE: Accessory package is located in the base of the crate.

**WARNING:** Spindle Sander weighs around 550 pounds (250 kilos) so make sure that the equipment used to unload and locate the Sander has the capacity to handle the Sander safely. We recommend that the Sander be mechanically lifted and set into position using industrial-duty strapping as mentioned in step 2 below. Pushing or sliding the Sander into position by one person is not recommended or advisable.

2. Locating the Sander in your shop where it will be operated can be done in two ways. One way is to use an industrial lifting device with a sling attached to the Sander as shown below. Another method is to have two persons CAREFULLY move the Sander into position.

**WARNING:** ONE PERSON SHOULD NOT attempt to lift and move Sander into position because of possibly incurring personal injury due to the Sander's weight.



Sling-lift Method Of Moving Sander

3. Carefully inspect Spindle Sander when uncrating it to make sure that nothing is damaged from shipment. Also, make sure that all Accessories are included.

**CAUTION:** Check to make sure that there is no evidence of damage to electrical controls, handles, base, table or tilt mechanism.

Check oil level by simply viewing the Sight Glass. Proper oil level should fill at least one-half of the tube. If oil level is low, REFER TO THE "MAINTENANCE

SECTION" of this Owner's Manual for instructions about adding oil.

4. If there is any apparent damage to Spindle Sander, we recommend that a report be filed immediately with the delivering carrier.

5. Once Sander is located in its permanent position, level it by shimming it where necessary. Mounting the Sander to the floor is optional because its weight is normally adequate to keep it in position during sanding operations.

## ELECTRICAL INFORMATION

**WARNING: ONLY A QUALIFIED ELECTRICIAN, FAMILIAR WITH MOTOR APPLICATIONS & KNOWLEDGE OF NATIONAL & LOCAL CODES SHOULD INSTALL OR SERVICE THIS EQUIPMENT**

1. Verify the Sander voltage is correct before making service connections.
2. 110 Volt, single-phase Spindle Sanders are equipped with power cords and should be plugged into a grounded power supply. 220 Volt, single-phase and three-phase Sanders need to be wired directly into the motor starter.
3. Connect power source per wiring diagram found on the inside cover of the motor starter. Grounding should conform to national and local codes.
4. Verify spindle rotation is counterclockwise. If spindle rotation is not counterclockwise, and the Sander is a 3-phase machine, disconnect the power to the Sander, then switch any two of the 3-phase power lines that will reverse the rotation. If the rotation is not correct on a single-phase Sander, contact the FREEMAN service dept. at 800-321-8511, (in Ohio) 800-362-2000, for instructions.

**IMPORTANT:** Inadequate power source such as unbalanced, 3-phase line voltages found in some phase converters or a low voltage service, could result in product damage or shortened product life, voiding the warranty.

## Operating Instructions

1. Once all safety precautions have been read understood and followed, plug Sander into grounded power supply.

**IMPORTANT:** Your Sander is equipped with a full voltage Starter that features an overload protector.

You will find three (3) controls on the electrostat SCR variable speed control box. The top dial controls the rpm's and oscillation speed of the Spindle. The

white toggle switch in the middle is the power "on/off" switch. This switch will provide power to the Sander but will not start it. The bottom switch is a magnetic-type, "start/stop" switch. (Refer to the Maintenance section for Cautions and information about the SCR electrostat variable speed DC control.

Turn the "ON/OFF" switch to "ON" position, set the speed dial to a normal position (between 3 and 7) and push the START button. The spindle should begin turning in a counterclockwise direction.

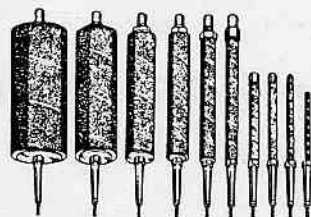
**IMPORTANT:** If Spindle is not rotating in a counterclockwise direction, "STOP" Sander IMMEDIATELY and unplug it from the power supply. Contact a licensed electrician or call our Service Department TOLL FREE :

**1-800-321-8511**

2. Unpack all Spindles and Throat Rings from the compartment in the base of the crate.

NOTE: The four (4) smaller Spindles and one of the larger Spindles do not have any nuts on the top. The Sleeves for these Spindles slide directly over the Spindle and set into the flange where they are secured by a Set Screw.

The types of Spindles supplied with the Sander are illustrated below.



3. To Assemble Spindles - match up Washer with Drum size. Place one (1) Washer over and onto Spindle. Place Rubber Drum onto Spindle. Slide Abrasive sleeve over Drum and hold it in place while you tighten Top Nut of Spindle. This tightening will compress the Rubber Drum enough to hold the Abrasive Sleeve in place for sanding operations.

**CAUTION:** Tighten Top Nut only enough (hand tight) to secure Abrasive Sleeve against Rubber Drum.

**IMPORTANT:** When Spindles are not being used, it is recommended to loosen the Spindle Nut which will decompress the Rubber Drum enough to maintain its original diameter.

4. Once spindles are assembled, store them on the Spindle Storage Tray where they will be conveniently available for use when you need them.

5. Select one of the three Throat Rings supplied with the Sander to correspond to the size Spindle to be used. Set the Throat Ring into the cavity which can be found in the top of the Table.

(Operating Instructions Step 5 cont.)

**CAUTION:** The Spindle Sleeve should pass through the Throat Ring without interference.

6. To Install Spindles – Place Spindle into Dust Shield opening and turn the knurled tip of the Spindle CLOCKWISE to lock Spindle into position.

**CAUTION:** If Spindle DOES NOT seat properly, check the female portion of the Spindle for any obstruction. If there is no obstruction and there still seems to be an improper seating, call our TOLL FREE number:

**1-800-321-8511**

**CAUTION:** When performing sanding operations with 3" and 4" drums, the maximum spindle speed setting used should be #7. Any setting higher will result in Sander vibration.

7. To Perform Sanding Operation–

- ◆ Maintain a comfortable stance and operating position during all sanding operations.



- ◆ Make sure workpiece to be sanded is always in firm contact with the surface of the Tilt Table.
- ◆ DO NOT "hog-in" workpiece when sanding because the quality of the resulting finish will be less than desirable.
- ◆ Make sure Taper Pin is removed from the Tilt Table Segment BEFORE attempting to adjust the angle of the Tilt Table. If Taper Pin is NOT REMOVED, damage can occur.
- ◆ Make sure to keep work area around Sander clean and free of unnecessary debris which could contribute to an accident.

## Maintenance



**WARNING:** Before performing any maintenance or making any major adjustments on the Sander, **UNPLUG POWER CORD** of Sander.

1. The Bearings in this Spindle Sander are permanently sealed and lubricated . . . NO OILING IS NECESSARY.
2. This Spindle Sander DOES NOT NEED GREASING.
3. The Oscillating Mechanism of this Spindle Sander operates in a bath of oil.

**IMPORTANT:** As long as the oil is maintained at the proper level (half full in the Sight Glass), the Oscillating Mechanism will provide many years of trouble-free performance. If the oil should fall below the proper level, the following action should be taken:

- ◆ Use 20W, non-detergent oil.
  - ◆ Pour oil into the oil cup (located just above the Sight Glass) to fill the Sight Glass half way.
4. Check Spindle Sander for worn parts periodically to ensure that Sander is always in top operating condition.

**CAUTION:** If dust or oil is allowed to collect and build up without regular cleaning and maintenance, unnecessary wear could occur.

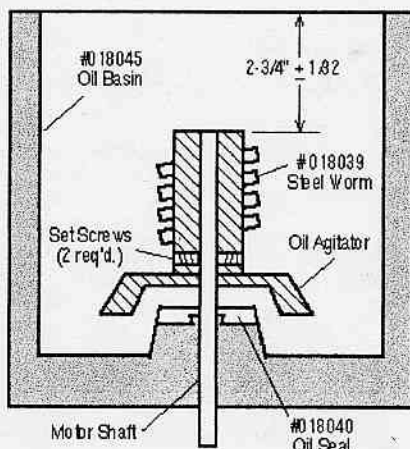
### Maintenance Of Abrasive Sleeves

*The best way to increase the life and performance of any Abrasive is to keep it clean and free from "pitch" build-up.*

The easiest way to assure that your Abrasive Sleeves are maintained in top condition is to use a FREEMAN Abrasive Cleaner Bar regularly (order # 136850).

It's easy to use –just press the Abrasive Cleaner Bar (with both hands) against the Abrasive Sleeve while it is rotating. The pitch will be removed from the Sleeve easily. By using the Abrasive Cleaner Bar, your Abrasive Sleeve will last 3 to 4 times longer and the burning and chatter caused by pitch loaded abrasives will be virtually eliminated.

### IMPORTANT – Removal & Installation Of #018018 Table Support & Housing Cap



Whenever #018018 Table Support & Housing Cap is removed and reinstalled, make sure that #018039 Steel Worm is 2-3/4" + 1/32 below top of #018045 Oil Basin. If Steel Worm exceeds 2-3/4", #018022 Female Spindle could slip out of the #018039 Steel Worm. This could cause a jam on the downstroke and the breakage or bending of #018035 Oscillating Bracket or #018036 Oscillating Crank.

### Replacement Of #018035 Oscillating Bracket

When replacing #018035 Oscillating Bracket, check the assembly by "hand rotating" to the top of the stroke. If the #018035 Oscillating Bracket does not have clearance of 1/16", file or grind it to allow for the proper clearance and travel.

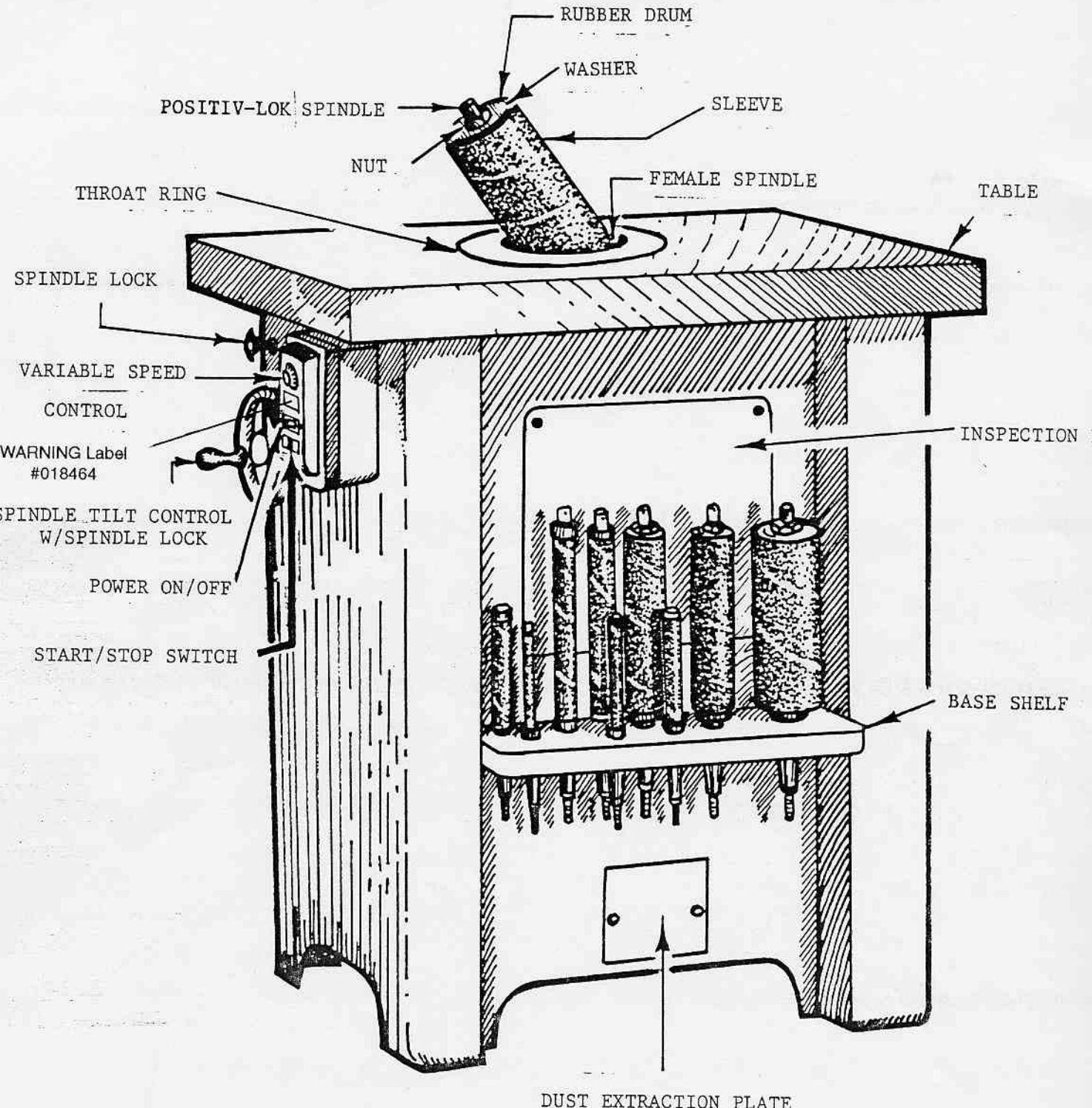
### Installation Of #018051 Dust Collector Adaptor

#### Adaptor

1. Mark rear of #018004 TiltTable. (The front of the Sander where the START-STOP Switch is located.)
2. Remove #018004 Tilt Table.
3. Position #018051 Adaptor on Tilt Table toward rear and drilled holes located at intersection of ribs.
4. Drill and tap (#20x10-32) holes. Install Adaptor to Tilt Table and reassemble Table to Sander.

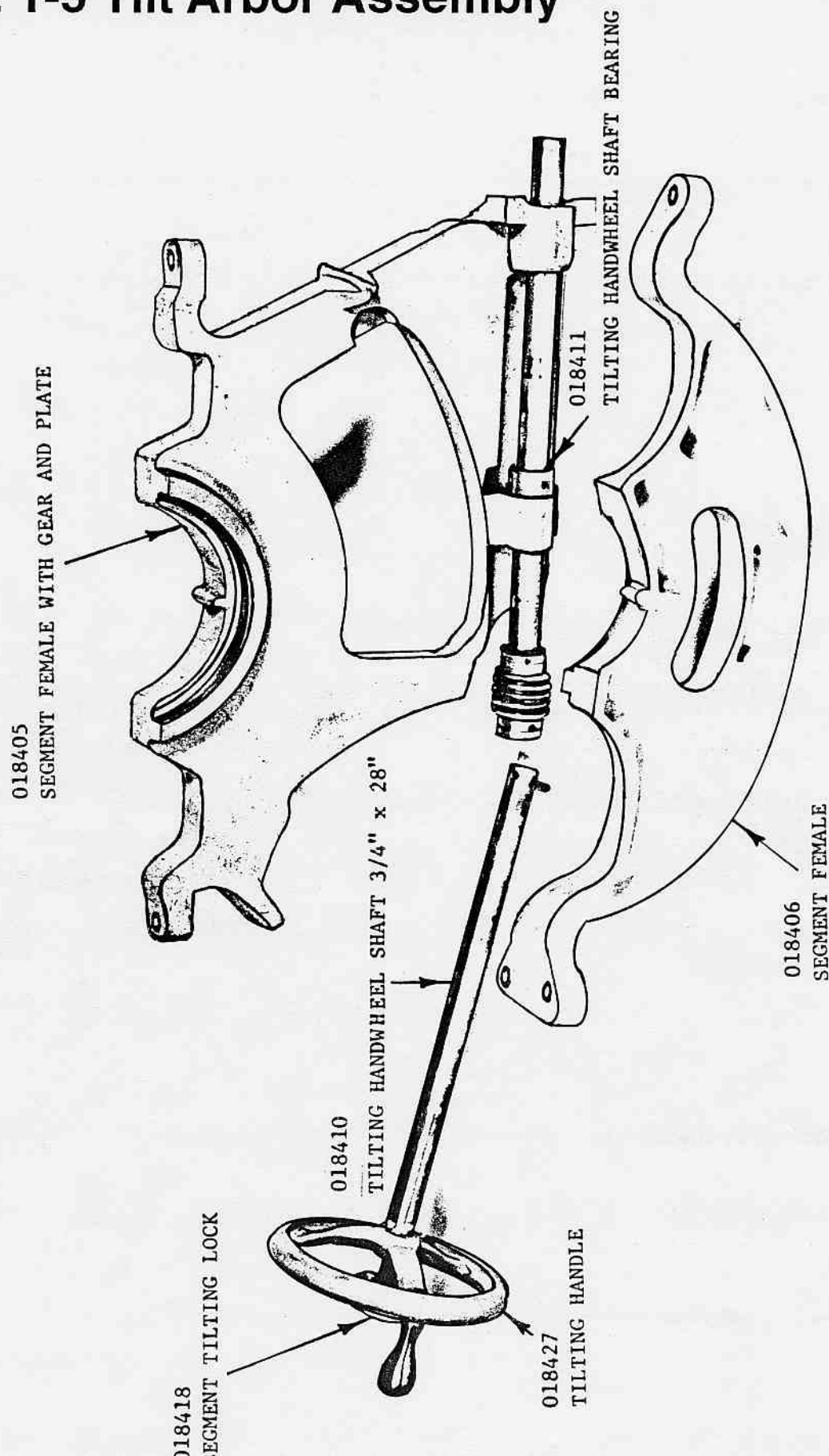


# STATE T-5 Spindle Sander w/ Tilt Arbor



# STATE T-5 Tilt Arbor Assembly

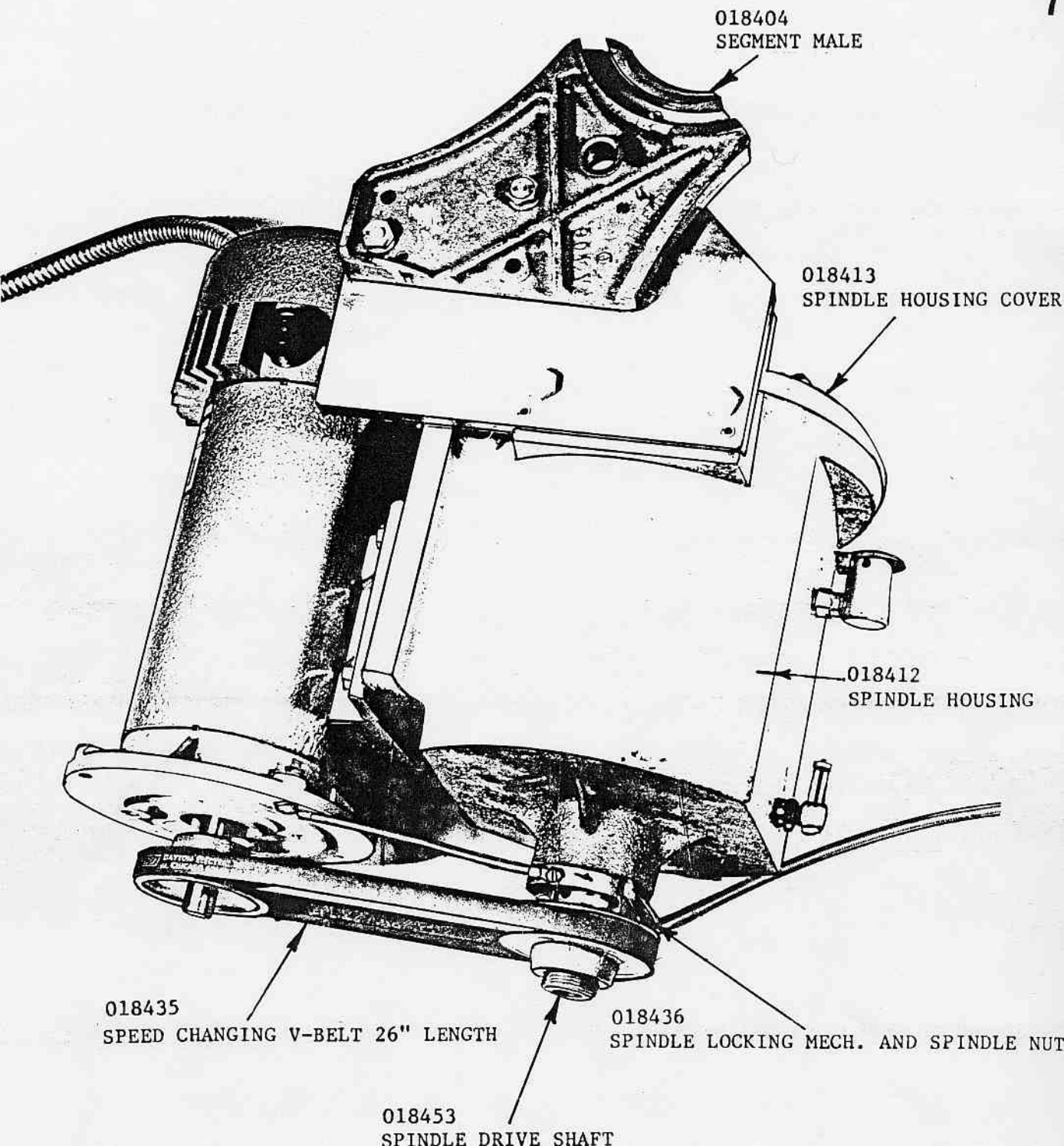
6





# STATE T-5 Spindle Drive Assembly

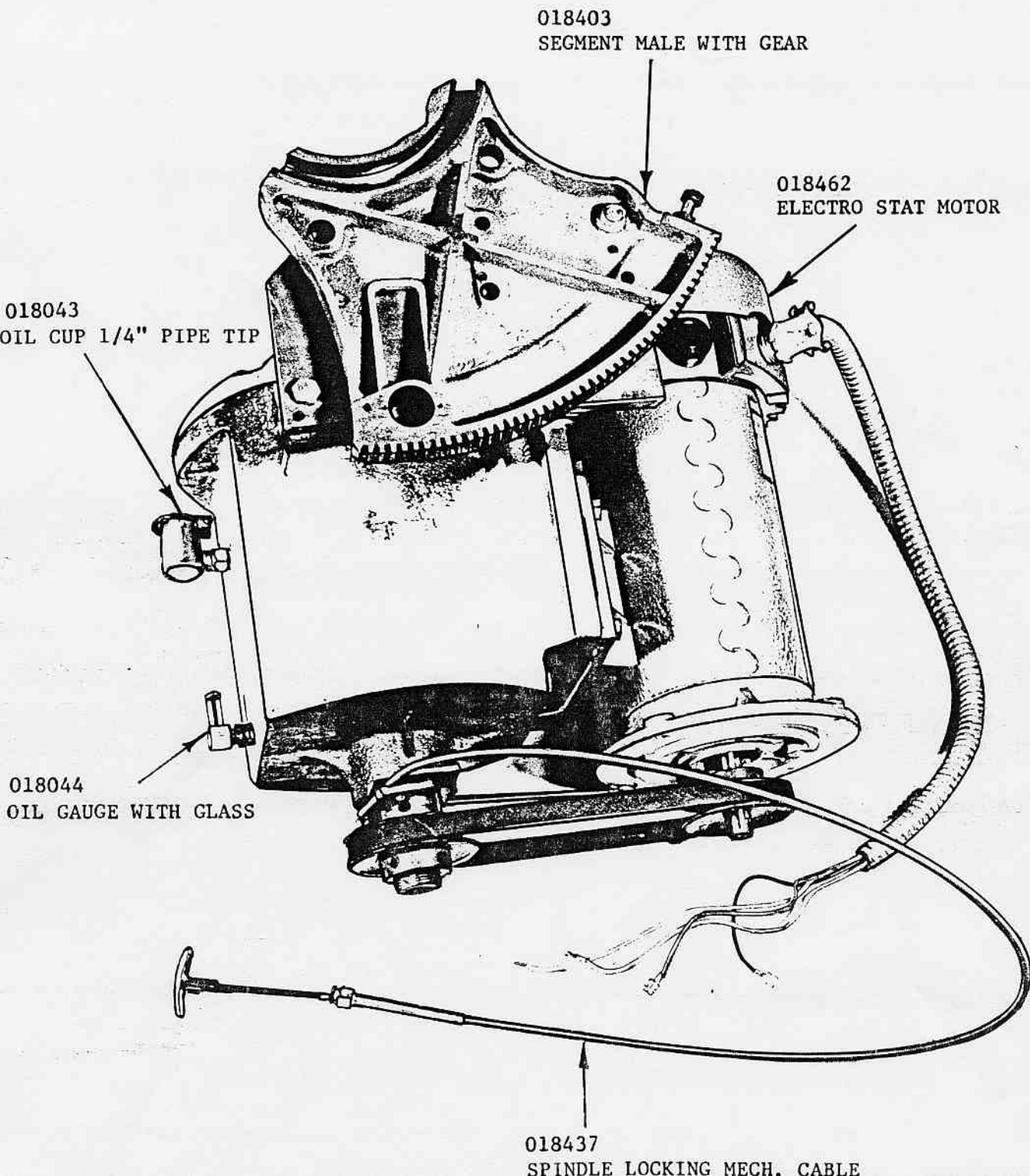
7



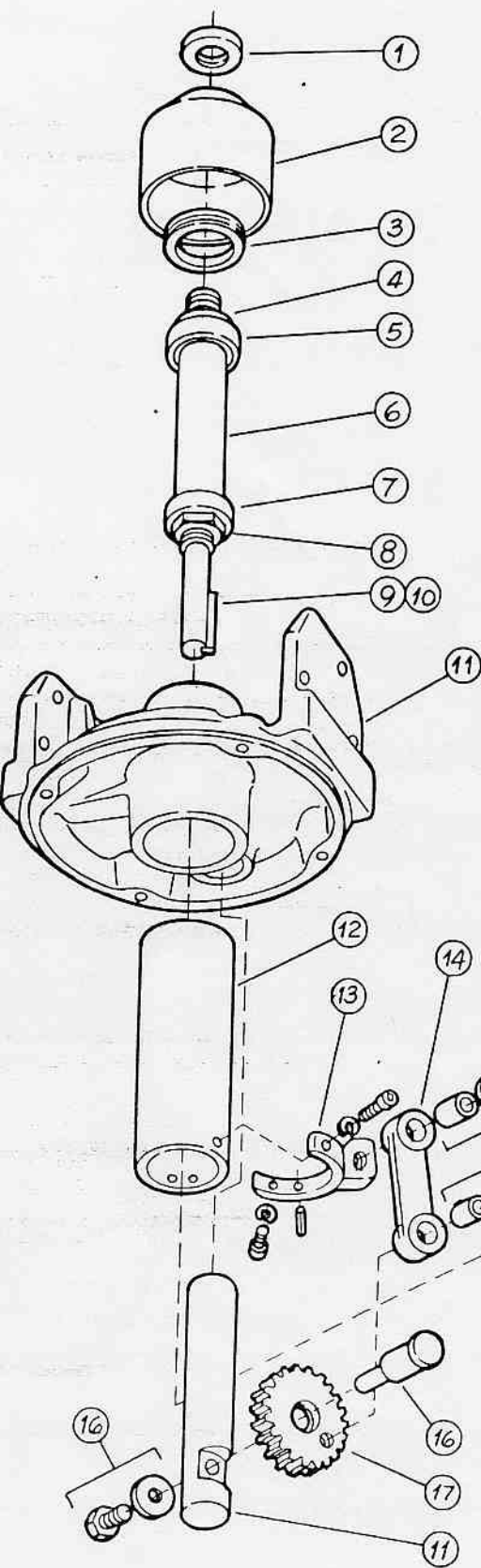


# STATE T-5 Spindle Drive Assembly

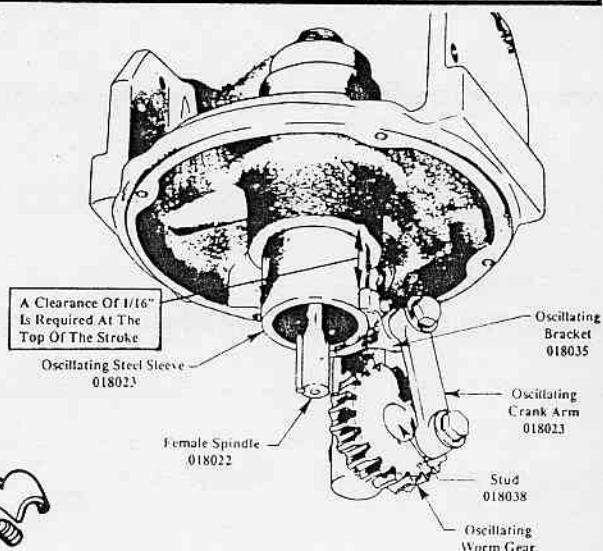
8



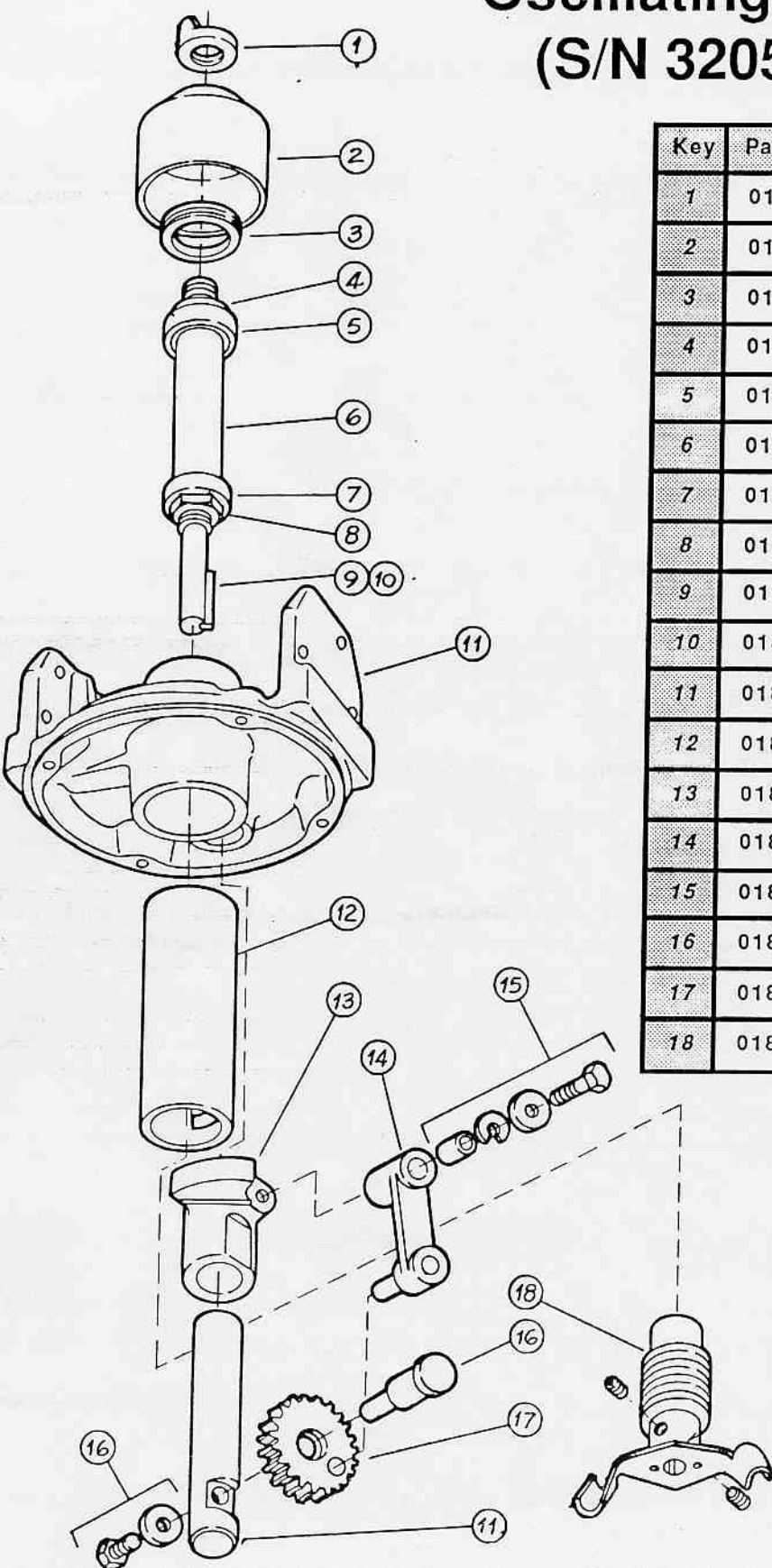
## Oscillating Mechanism Parts (Current Models)



Key	Part No.	Description
1	018458	Dust Shield Retaining Nut
2	018025	Dust Shield
3	018050	Retaining Ring (for Upper Spindle Bearing)
4	018458	Retaining Nut (for Upper Spindle Bearing)
5	018026	Upper Spindle Bearing (larger than 018027)
6	018022	Female Spindle
7	018027	Lower Spindle Bearing
8	018459	Lower Bearing Retaining Nut
9	018076	Keyway
10	018077	Spring Pins for Keyway (2-req'd.)
11	018018	Table Support & Housing Cap
12	018023	*OSC* Steel Sleeve
13	018035	*OSC* Bracket
14	018036	*OSC* Crank Arm w / Bushings
15	018070	Bushing, Bolt, Washers (2 sets req'd.)
16	018038	*OSC* Worm Gear Stud w/ Bolt & Washer
17	018037	*OSC* Worm Gear
18	018039	*OSC* Steel Worm w/ (2) Set Screws

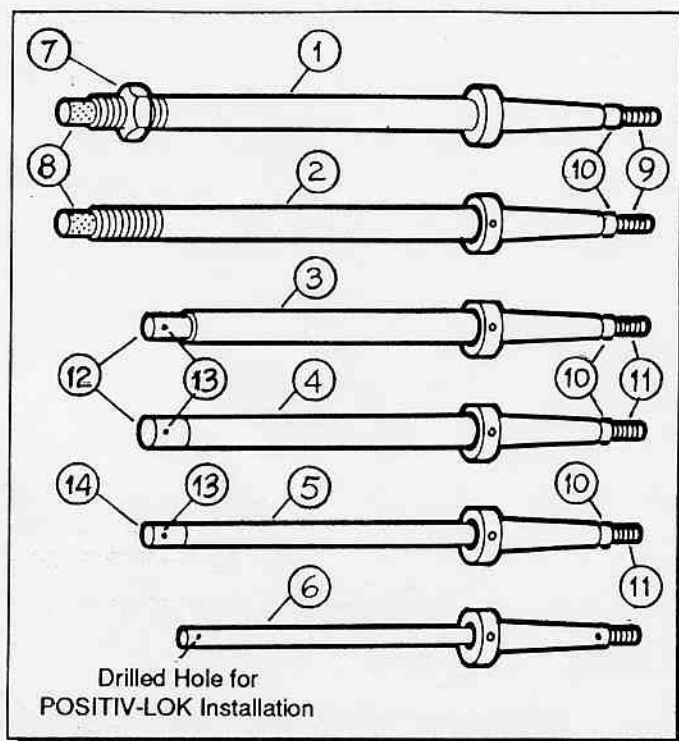


## Oscillating Mechanism Parts (S/N 3205 & Below Models)

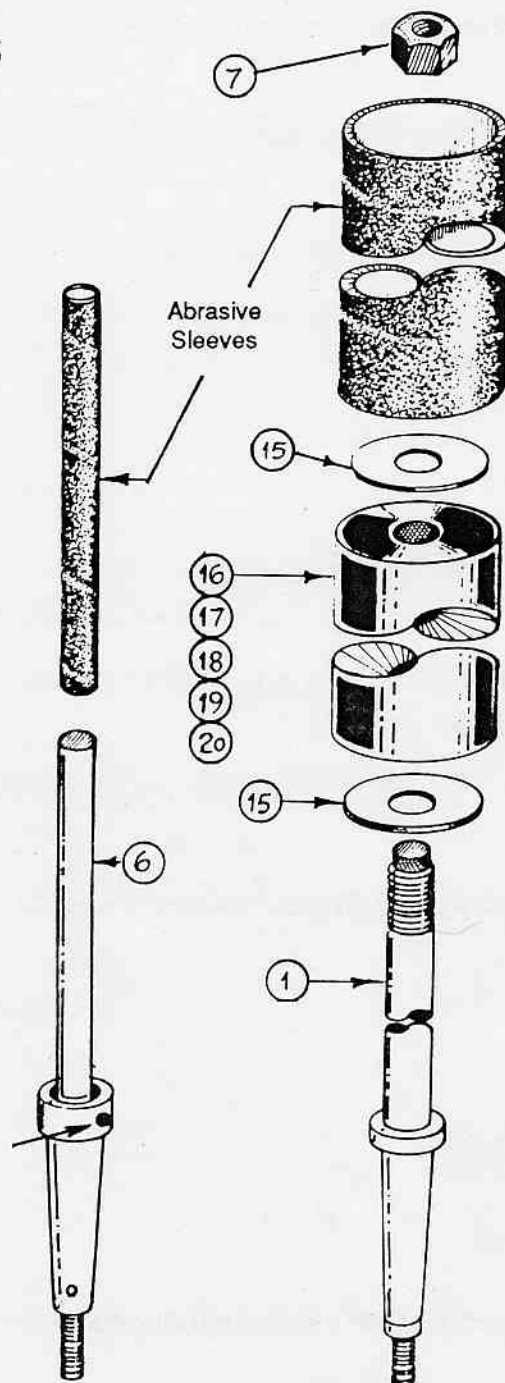


Key	Part No.	Description
1	018457	Dust Shield Retaining Nut
2	018025	Dust Shield
3	018050	Retaining Ring (for Upper Spindle Bearing)
4	018458	Retaining Nut (for Upper Spindle Bearing)
5	018026	Upper Spindle Bearing (larger than 018027)
6	018022	Female Spindle
7	018027	Lower Spindle Bearing
8	018459	Lower Bearing Retaining Nut
9	018076	Keyway
10	018077	Spring Pins for Keyway (2-req'd.)
11	018018	Table Support & Housing Cap
12	018024	*OSC* Steel Sleeve
13	018065	*OSC* Bracket
14	018034	*OSC* Crank Arm
15	018069	Bushing, Bolt, Washers
16	018038	*OSC* Worm Gear Stud w/ Bolt & Washer
17	018066	*OSC* Worm Gear
18	018039	*OSC* Steel Worm w/ (2) Set Screws

## POSITIV-LOK Spindles (Current Model)



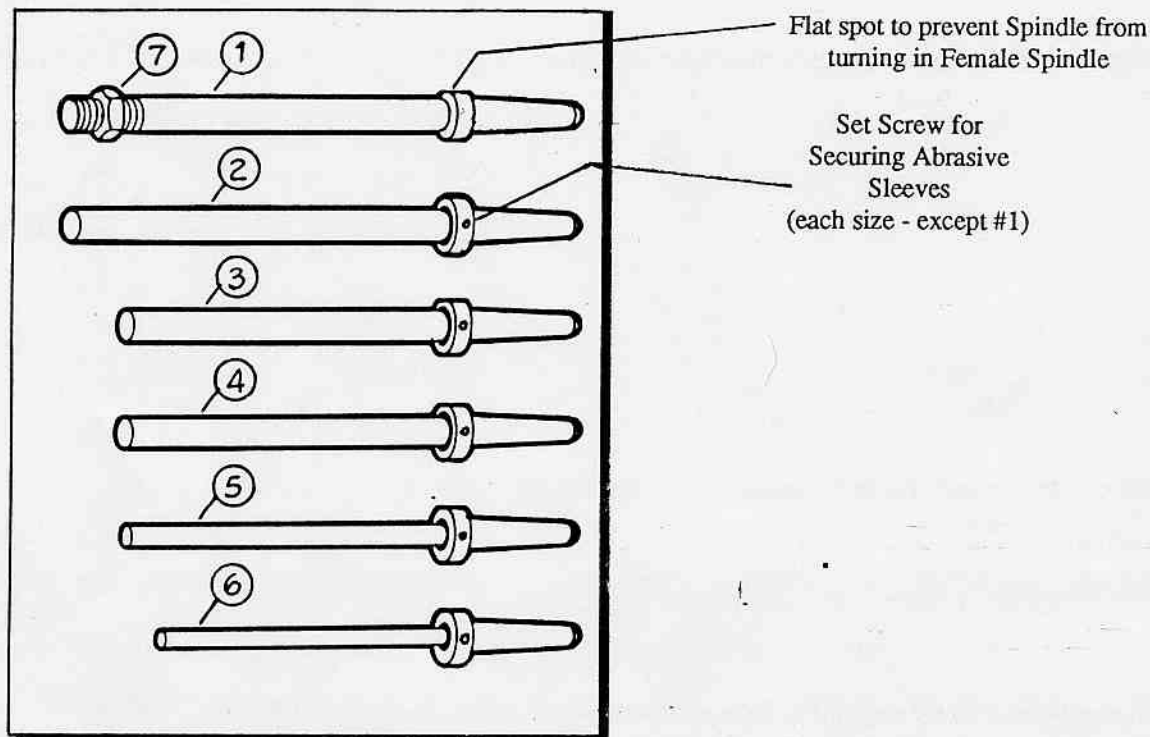
*Set Screw for  
Securing Abrasive  
Sleeves  
(each size)*



Key #	Cat. No.	Description	Key #	Cat. No.	Description
1	018428	Spindle - 3/4" x 9" (For Drums)	11	018059	Short Rod
2	018426	Spindle - 3/4" x 9"	12	018072	Collar - 1/2" & 5/8"
3	018429	Spindle - 5/8" x 6"	13	018073	Spring Pin
4	018430	Spindle - 1/2" x 6"	14	018071	Collar - 3/8"
5	018431	Spindle - 3/8" x 6"	15	018461	Washer for Rubber Drums
6	018432	Spindle - 1/4" x 5"	16	133220	Expanding Rubber Drum - 1" dia.
7	018064	Drum Compression Nut	17	133230	Expanding Rubber Drum - 1-1/2" dia.
8	018460	Knurled Nut	18	133235	Expanding Rubber Drum - 2" dia.
9	018055	Long Rod	19	133245	Expanding Rubber Drum - 3" dia.
10	018060	Lower Collar	20	133250	Expanding Rubber Drum - 4" dia.



## Spindles (Old Model Sander)



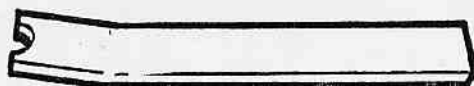
Key #	Cat. No.	Description	Key #	Cat. No.	Description
1	018021	Spindle - 3/4" x 9" (For Drums)	6	018032	Spindle - 1/4" x 5"
2	018028	Spindle - 3/4" x 9"	7	018064	Drum Compression Nut
3	018029	Spindle - 5/8" x 9"	8		
4	018030	Spindle - 1/2" x 6"	9		
5	018031	Spindle - 3/8" x 6"	10		

## Miscellaneous Sander Parts

#018075 Reamer for B-4 & T-5 Sanders



#018033 Spindle Shaft Extractor





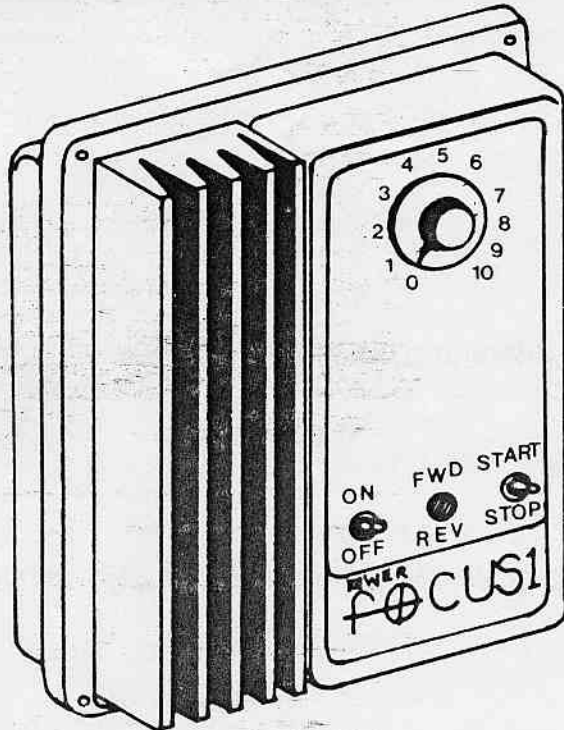
018415

ELECTRO STAT CONTROL

## SPEED SETTINGS FOR FOCUS #1 CONTROL

(Approx.)

Setting	RPM
1	100
2	300
3	600
4	900
5	1100
6	1400
7	1600
8	DO NOT OPERATE SANDER 1950
9	AT THESE SETTINGS WHEN 2200
10	USING 3" OR 4" DRUMS 2500



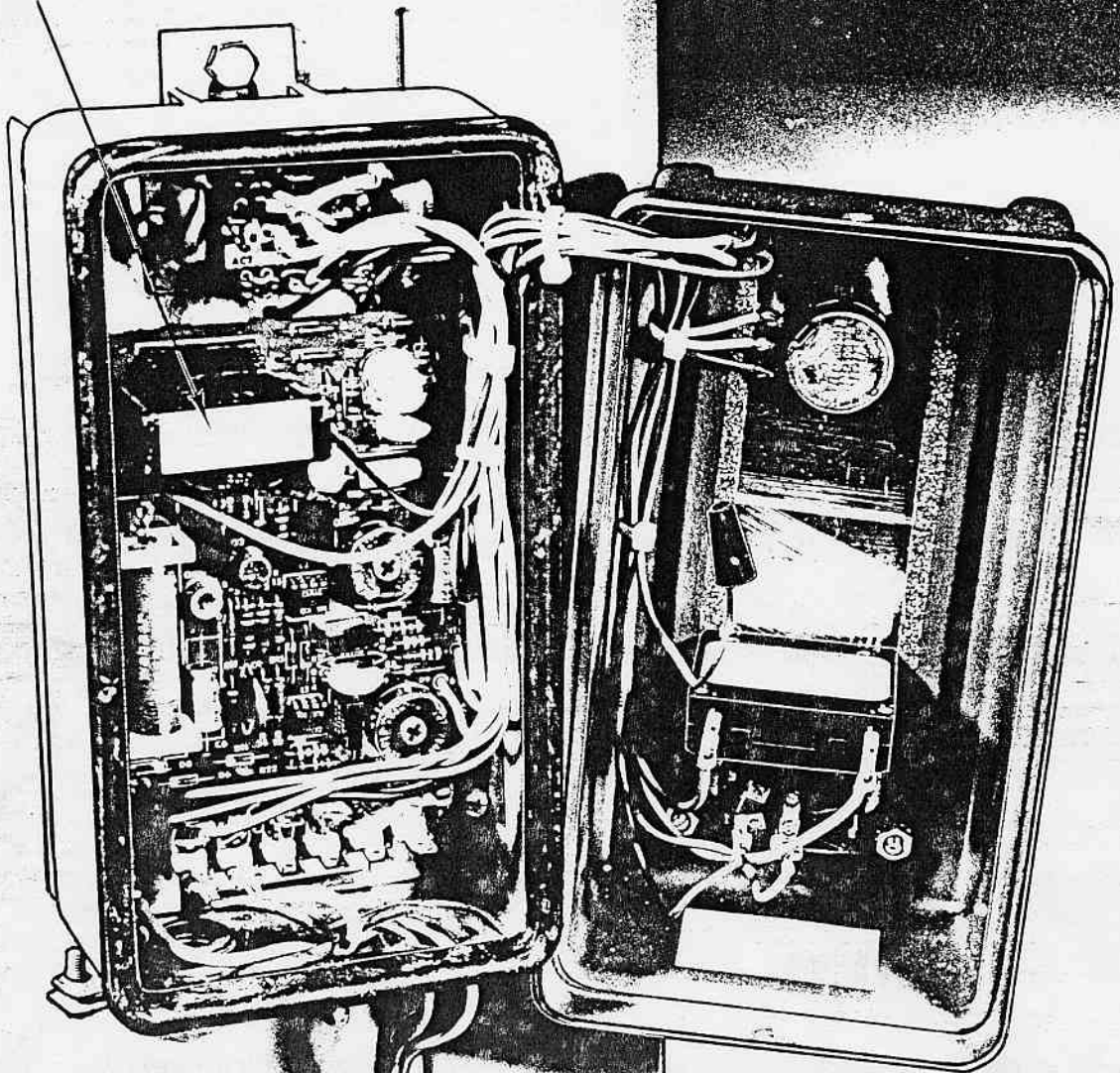
ALTERNATE FOCUS #1 CONTROL BOX  
ON LATER MODELS.



# STATE T-5 Electrical Controls

14

018456  
JEFFERSON TRANSFORMER 1/5 KVA 211-081





# STATE Spindle Sanders Accessories

## Abrasive Sleeves

For Wood - Garnet Paper Sleeves  
For Metal - Aluminum-Oxide, Glue-Bond, Cloth Sleeves

These Abrasive Sleeves are constructed to give the dependable service and surface finishes required throughout the pattern industry. The Standard Size Abrasive Sleeves listed on this page are furnished as standard equipment with State Spindle Sanders and they are compatible with other makes of sanders.

We also carry in stock, for immediate shipment, the longer Abrasive Sleeves listed on this page.

Note: The Abrasive Sleeve sizes and grits listed are considered to be the most popular for most applications, but sizes up to 7" I.D., in Resin-Bond Cloth are also available.

## Abrasive Sleeves (Stock Size) For STATE Spindle Sanders & Master Spindle Sanders

Garnet Sleeves — Paper Back							
STATE				MASTER			
Cat. No.	I.D.	Lgth.	Grit	Cat. No.	I.D.	Lgth.	Grit
133005	1/4"	5"	50	133010	1/4"	6"	50
133015	3/8"	6"	50	133015	3/8"	6"	50
133020	1/2"	6"	50	133025	1/2"	9"	50
133030	5/8"	6"	50	133035	5/8"	9"	50
133040	3/4"	9"	50	133040	3/4"	9"	50
133050	1"	9"	50	133055	1"	11"	50
133060	1 1/4"	9"	40	133065	1 1/4"	11"	40
133070	1 1/2"	9"	40	133075	1 1/2"	11"	40
133080	2"	9"	40	133085	2"	11"	40
133090	2 1/2"	9"	40	133100	3"	11"	40
133095	3"	9"	40	133110	4"	11"	40
133105	4"	9"	40				
Metalworking Sleeves - Cloth Back ("X" Wt.)							
133115	1/4"	5"	60	133120	1/4"	6"	60
133125	3/8"	6"	50	133125	3/8"	6"	50
133130	1/2"	6"	50	133135	1/2"	9"	50
133140	5/8"	6"	50	133145	5/8"	9"	50
133150	3/4"	9"	50	133150	3/4"	9"	50
133155	1"	9"	50	133160	1"	11"	50
133165	1 1/4"	9"	40	133175	1 1/4"	11"	40
133170	1 1/2"	9"	40	133180	1 1/2"	11"	40
133185	2"	9"	40	133190	2"	11"	40
133195	3"	9"	40	133200	3"	11"	40
133205	4"	9"	36	133210	4"	11"	36

Other sleeve diameters & grits are available; information upon request.

## FREEMAN Abrasive Cleaner Bar

The Abrasive Cleaner Bar is easy to use — just hold bar with both hands against the rotating abrasive disc or belt until the majority of loaded particles are removed. By using the abrasive cleaner bar you will:

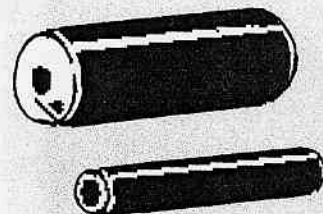
- ◆ Realize 3 to 4 times more abrasive disc and belt life.
- ◆ Prevent burning, chatter marks and machine vibration caused by loaded abrasives.
- ◆ Increase capabilities to produce uniform finishes.
- ◆ Eliminate messy cleanup.

Cat. No.	Description	Size	Wt. Lbs.
136850	Abrasive Cleaner Bar	1 5/8" x 1 5/8" x 8 1/4"	3/4

## Expandable Rubber Drums

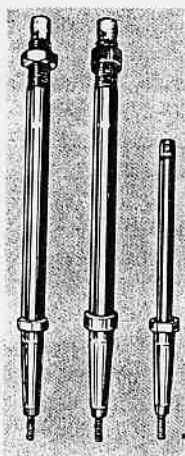
For Use With Abrasive Sleeves

These Expandable Rubber Drums are manufactured using a rubber compounded for proper resiliency. Each drum is supplied with two steel washers, equal in diameter to the drums which provides uniform compression and expansion of the rubber drum to secure abrasive sleeve.

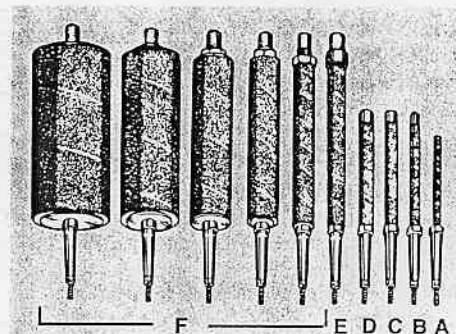


Cat. No.	Outside Diameter	Fits Spindle Diameter	Drum Length
133220	1"	3/4"	9"
133225	1 1/4"	3/4"	9"
133230	1 1/2"	3/4"	9"
133235	2"	3/4"	9"
133240	2 1/4"	3/4"	9"
133242	2 1/2"	3/4"	9"
133245	3"	3/4"	9"
133250	4"	3/4"	9"

## POSITIV-LOK Drawbar Spindles



- ◆ Time and cost-saving spindle changes.
- ◆ Turn clockwise and spindle is locked in place; turn counterclockwise and spindle is ejected. All done from the table top and without tools.
- ◆ Spindle tops are smaller than the abrasive sleeve in all sizes to provide unrestricted working height.
- ◆ Abrasive sleeve is held at bottom in collar recess.
- ◆ Drawbar, threaded at bottom, holds spindle firmly during operation.



### Ordering Information

Cat. No.	Illustration	Description	Size
018432	A	Positiv-Lok Spindle	1/4" x 5"
018431	B	Positiv-Lok Spindle	3/8" x 6"
018430	C	Positiv-Lok Spindle	1/2" x 6"
018429	D	Positiv-Lok Spindle	5/8" x 6"
018426	E	Positiv-Lok Spindle	3/4" x 9"
018428	F	Positiv-Lok Spindle *	3/4" x 9"

\* For Rubber Drums